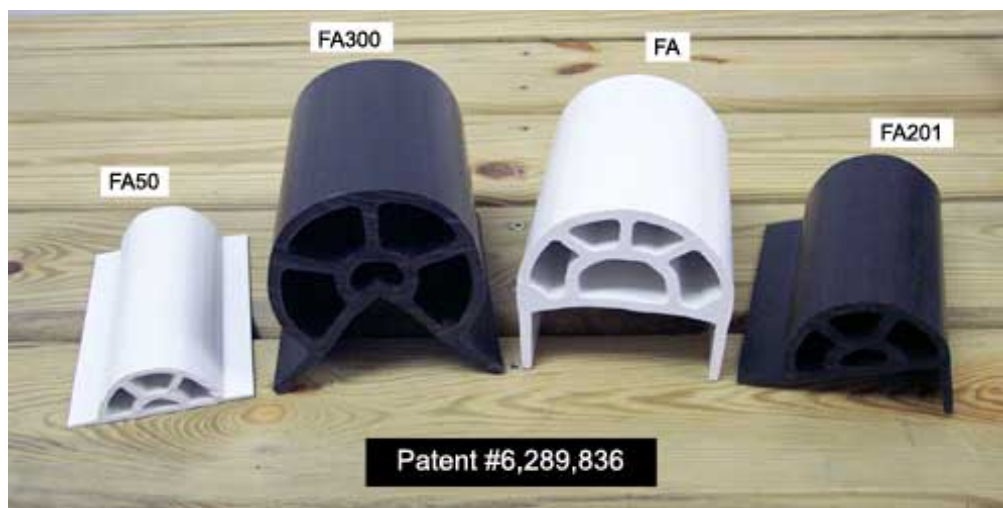


Introducing the **FEND-ALL® Family of Dock Fenders**



Offered in four styles — vertical, horizontal, floating dock, and small boat. The FEND-ALL® Family of Fenders are the only continuously supported, double-wall fenders available on the market with an "internal high-energy absorption web" capable of 250+% extension before breakage. This combined with a special UV stabilized material will make the FEND-ALL® Family of Fenders the standard bearer for all marine fenders. The FEND-ALL® Family of Fenders are trademarked and patented (patent #6,289,836).

The revolutionary FA300 vertical or horizontal corner fender has been very popular with marinas that have floating fuel docks and high volume transient docks for its durability and resiliency.

The FA201 is rapidly becoming the standard for floating docks that handle larger vessels due to its unique patented design, durability, and strength.

These two fenders were quickly and successfully brought to market through the design, testing, and development stages, and passed with flying colors. The main, and most popular, fender in the FEND-ALL® Family of Fenders, the FA has produced results beyond design expectations.

The FEND-ALL® Family of Fenders are made of a polyvinyl chloride (PVC) called GEON C9000. The fenders are extruded from virgin material and have a life expectancy of 10+ years.

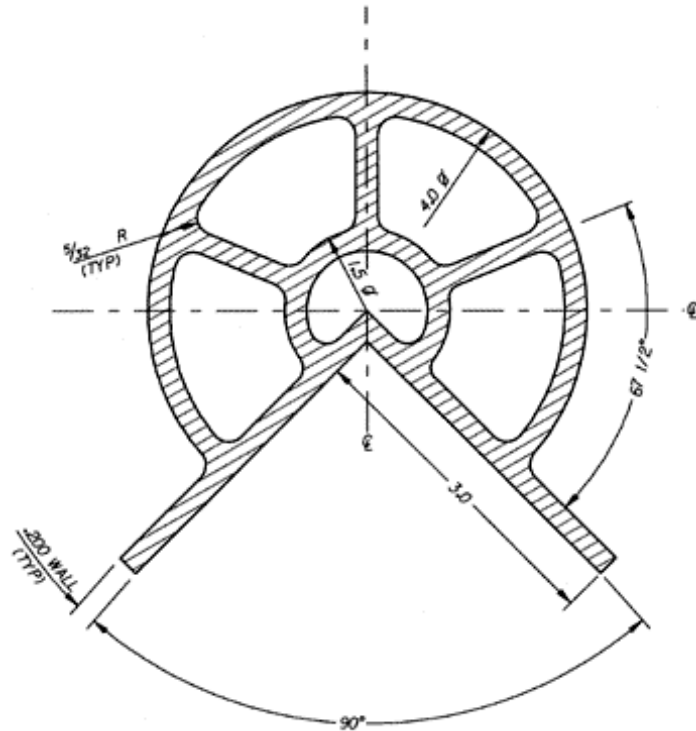
Material Data:

Density/Specific Gravity	1.4400
Durometer (Shore) Hardness	90 Shore A
Brittle Temperature	-7° F
Melting Point	351° F

FEND-ALL® Family of Dock Fenders

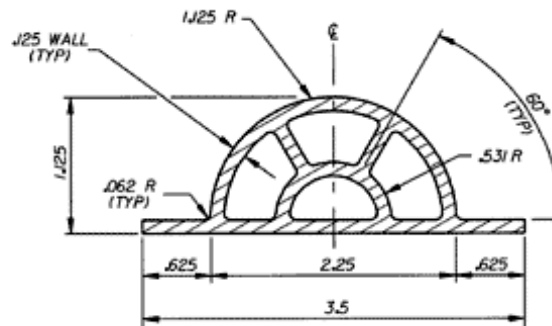
FEND-ALL® FA300

The FA300 is a revolutionary design in corner fenders, both vertical and horizontal. Used primarily to protect vessels from sharp protruding corners or bulkheads. As with its cousins, FA and FA201, the FA300, with its internal high-energy absorption web can handle a variety of different size vessels. Available in 10' lengths or increments of 2 feet, black or white in color.



FEND-ALL® FA50

The FA50 is intended for use in the small boat market, up to 30', or in areas where a lower profile fender is necessary due to space restrictions for slightly larger vessels. This is possible due to the internal high-energy absorption web. Available in a standard length of 10', and black or white in color.



FEND-ALL® Family of Dock Fenders



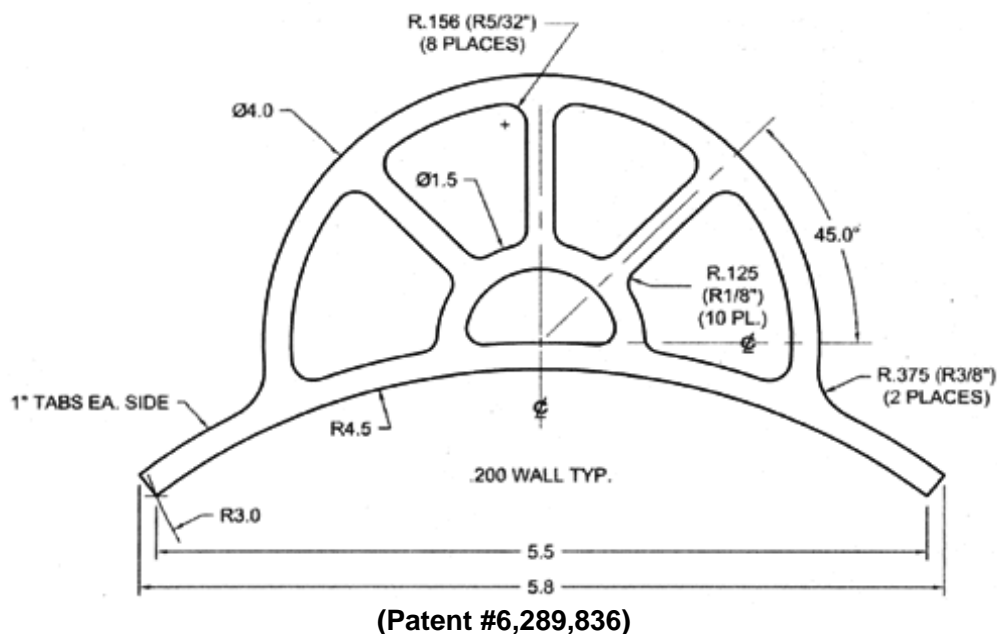
(Patent #6,289,836)

Can your fenders withstand this type of pressure and punishment for 66 continuous hours? The **FEND-ALL® Family of Fenders** can, and do so without any distortion or stress fractures and returns to its original shape!



Introducing the Newest Member of the **FEND-ALL® Family of Dock Fenders... The FA400**

The **FA400**, with the same patented design as its siblings, is your answer for maximum protection in narrow slips with no need for special fasteners. The **FA400** can be mounted directly to pilings, ranging from 8" to 14" diameter, using stainless steel full-annular ring shank nails.



The **FEND-ALL® Family of Dock Fenders** are the only continuously supported, double-wall fenders available with an "internal high-energy absorption web". The web design quickly disperses and dissipates the energy produced upon contact, protecting both the dock and the vessel from possible damage.

FEND-OFF® Family of Dock Fenders



Light Duty



Medium Duty



Heavy Duty

The **FEND-OFF® Family of Dock Fenders** come in 5 models:

- **Light Duty (LD)** for vessels to 35'
- **Medium Duty (MD)** for vessels to 80'
- **Heavy Duty (HD)** for vessels to 125'
- **Concrete Pile or Extra Heavy Duty (CP)** for vessels to 150+'
- **Concrete Corner (CC)** for vessels to any size, specifically for concrete corners.

Available in black, white, or gray.

Standard lengths: 6', 8', 10', and 12'.

Custom fenders available upon request. Call for pricing and availability.



Concrete Pile or Extra Heavy Duty



Concrete Corner

FEND-OFF® Family of Dock Fenders

Our **FEND-OFF® Dock Fenders** are designed to provide a protective barrier between hard surfaces, such as docks, seawalls, pilings and the hulls of boats and yachts. Pictured here are the White FEND-OFF® Concrete Pile Fenders.



The vertically mounted **CP FEND-OFF® Dock Fenders** (shown at left) are on large, wooden structures at the end of a concrete wall. This system provides maximum protection for the berthing of large yachts against concrete. Shown here is an array of Concrete Pile FEND-OFF's® at "The Boathouse" in Fort Lauderdale, Florida.

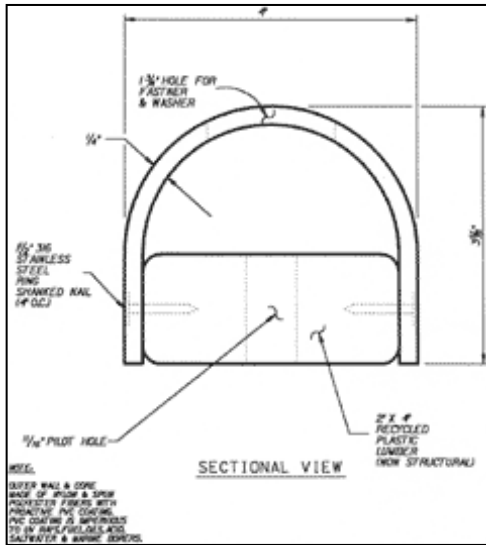
Shown here is the **CC FEND-OFF® Dock Fender**, a 90° horizontally or vertically mounted corner fender. This fender is designed and engineered specifically for concrete corners. The placement of the mounting holes is designed to prevent the corner of the concrete from cracking. Pictured here is a FEND-OFF® Concrete Corner Fender mounted horizontally.



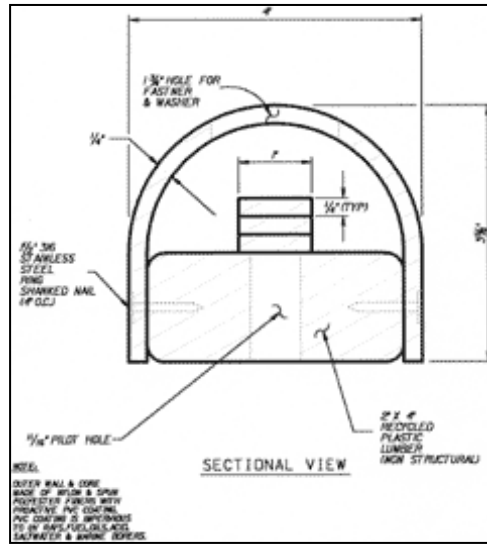
FEND-OFF® Dock Fenders not only provide maximum protection for a vessel's hull, but will stand up to the harsh marine environment. The outer shell is made of a flexible PVC with spun polyester fiber attached to recycled plastic lumber. Fasteners are 316 stainless steel full annular ring shank nails. Shown here are Fender Braces, Concrete Corner, and Heavy Duty FEND-OFF® Fenders.

FEND-OFF® Family of Dock Fenders

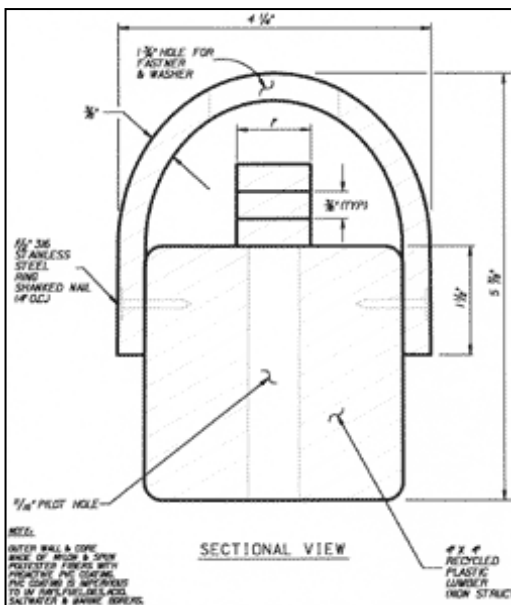
Profiles and Dimensions



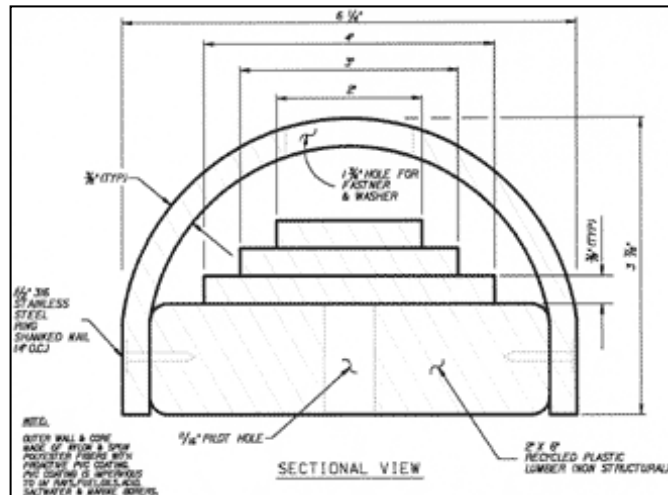
Light Duty FEND-OFF® Fender



Medium Duty FEND-OFF® Fender



Heavy Duty FEND-OFF® Fender



Concrete Pile or
Extra Heavy Duty FEND-OFF® Fender

Not Shown: Concrete Corner (CC) model

Fender Braces

When pilings are not available for mounting the fenders necessary to protect your vessel, fender braces are an inexpensive alternative to installing pilings and not as unsightly.

Made of marine grade structural aluminum I-beams and aluminum plate, these TIG welded braces can be made to accommodate almost any situation. When used on larger vessels, for maximum protection and strength, the fenders should not extend above or below the braces more than 12", unless supported from behind by a bulkhead or lower piling.

The FEND-ALL® or FEND-OFF® Fenders, mounted on plastic 4x4's, are thru-bolted using stainless steel bolts, nuts and washers.

Standard braces are 1', 2', and 4' up, and 6'-3' up and 3' down. Custom braces are available upon request.

